



Our school breaks up tomorrow, Friday (13<sup>th</sup> February) for half term. Pupils and staff return to school on Monday 23<sup>rd</sup> February for the beginning of the second half of the Spring term.

After 32 year's service as a Carr Hill 'dinner lady' Maureen Sirmond (Mrs Sirmond) has decided to begin her retirement. Over the years Maureen has watched over what amounts to three generations of children and she will be sorely missed as a great character in our school. Maureen's retirement date, and last day in our school, will be Friday 13<sup>th</sup> March 2015. Our school joins together in thanking Maureen for the many years of unstinting service to the children of Carr Hill.

### Dates to Remember

Please remember that:-

- Year 6 pupils will take their Key Stage 2 SATs week commencing 11<sup>th</sup> May 2015;
- Years 3, 4 and 5 will have their optional SATs during w/c 18<sup>th</sup> May 2015, and
- Year 2 pupils have ongoing Key Stage 1 assessments throughout May and June 2015.

As there is no authorised absence for holidays taken in term time we would expect all of our children to attend school during these weeks unless they are genuinely ill and can't come to school to complete their assessment work.

### School Dinner Money Debt

Can we just remind you that dinner money should be paid before your child takes a school meal, or at least by the Thursday of that same week.

Just as you wouldn't go to McDonalds and say "Can I have a meal but pay for it in 3 weeks' time", you also shouldn't expect the school to pay for school meals that your child has eaten in the previous 2 or 3 weeks.

Please, if you receive a reminder letter or text from us regarding money owed - don't ignore it!

### School Car Park

Please remember that parents and children should NOT be walking through our main car park. This area is for staff/visitors arriving by car and is also used by large delivery vehicles.

Parents/Carers will be completely at fault if there's an accident caused as a result of them being in an area they should not be in.

Also, parents should not be driving into the school car park to drop off or collect their child. It's not big enough!

### A Gentle Reminder of our School Rules

As we state in our School Prospectus, which is available on our school website, we aim to have an atmosphere of co-operation within our school and, therefore, our school rules are kept to a minimum. Our prime concern is the happiness and safety of all children and staff who work in Carr Hill Community Primary School. Here are examples of some of the 'challenges' we are dealing with currently;

1. Children should not wear jewellery in school because of the risk to their well-being
2. We discourage children from bringing money to school and we will not accept liability for any money which may go missing as a result of a child bringing it into school. All 'school' money will be collected from the child at administration office.
3. Sweets and toys should not be brought into school.
4. We have a school uniform - Children are not permitted to wear denim jeans, tracksuits or highly 'fashionable' clothing in school.
5. Children are not allowed to leave school during the course of the day unaccompanied and we will not allow children to be put into taxis on their own.
6. **Highly fashionable haircuts, including shaving of patterns and zig-zag lines into the head is NOT allowed. Pupils will be asked to remain at home with work provided until their hair is of an acceptable style/length.**
7. We strongly discourage children from having their ears pierced and do not permit any other body piercings.

### Breakfast Club / After School Clubs

Our Breakfast Club and after school clubs will restart on Monday 23<sup>rd</sup> February.

No children are allowed into school before 8.00am so please don't allow your child to appear at the school doors at 7.40am as is happening currently with some children. We are not responsible for their safety and well-being until 8.00am if they are in school.

## Sainsbury's Vouchers

Once again, we are collect Sainsbury's Vouchers so if you or your family/friends shop at Sainsbury's, would you please send or bring any vouchers received into school. Thanks.

## Change to Pupil Contact Details

Please don't forget that, if you change your contact details, you need to inform the school office so that we can update our records and the text messaging service records.

## Change to the Length of the School Working Day

Governors have approved a proposal to alter the length of the school working day. At the beginning of next half term you will receive a letter with details of how our pupil working times, 'the school day' are changing.

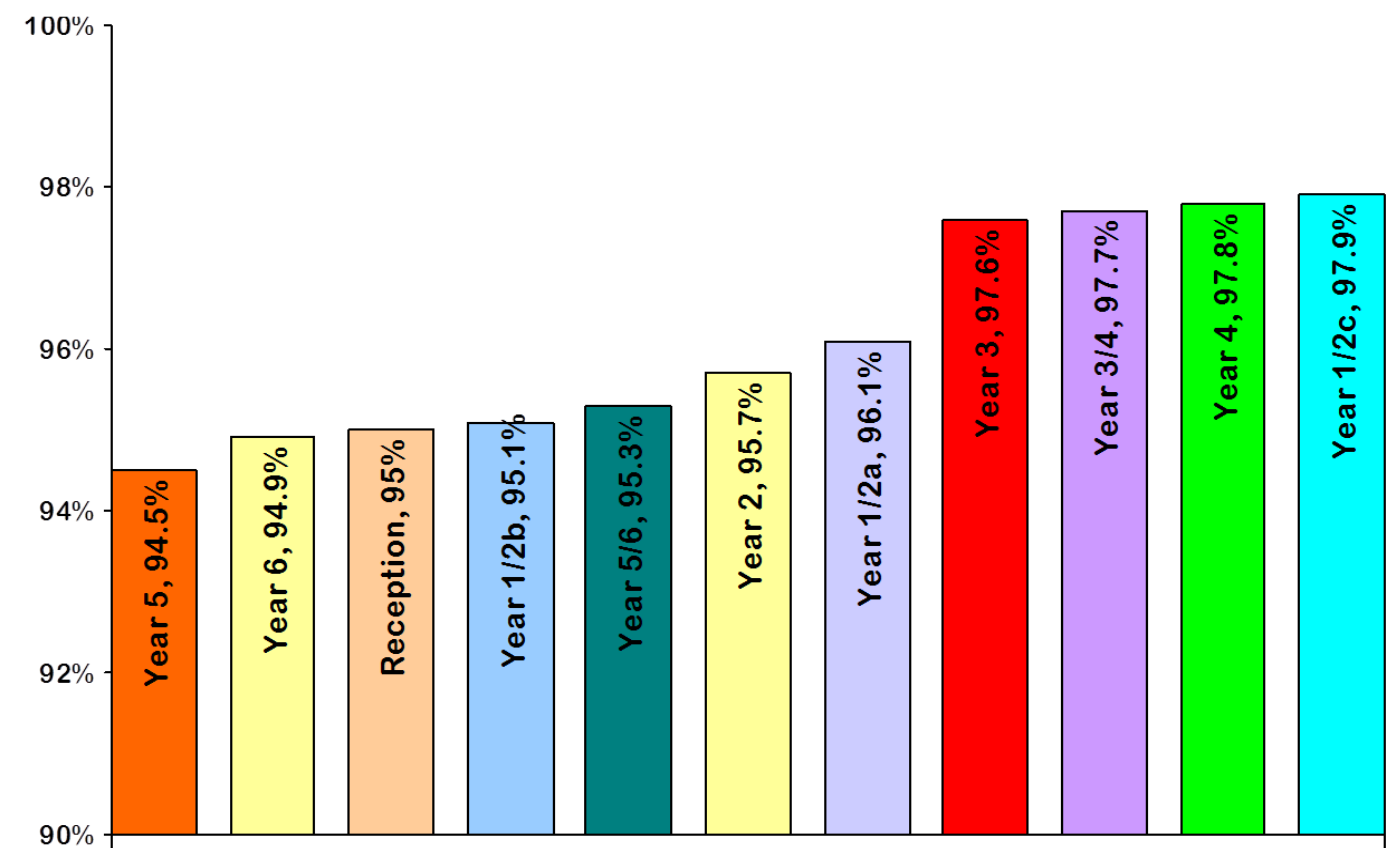
Our school role is significantly larger than it was some years ago and changes are needed to make areas of our work more efficient.

You will have your opportunity to provide feedback on the proposed changes.

## Attendance – Spring term 2015

The whole school percentage attendance for this half term, from 5<sup>th</sup> January until Thursday 12<sup>th</sup> February, is 96.1%, a great effort but one that we can still improve on during the rest of the school year. Here is the attendance data, class by class. Congratulations to Miss Kimber's Class who have the highest percentage attendance this term, at 97.9%. We have 65 pupils who still have 100% attendance so far this school year.

The class with the highest attendance since the start of the school year is Mrs Mills' Class with a fantastic 98%.



## SCHOOL TERM DATES 2014/2015

<b>Spring Term</b>	Monday 5 <sup>th</sup> Jan until Thursday 2 <sup>nd</sup> April 2015	(Half term 16 <sup>th</sup> – 20 <sup>th</sup> Feb 2015)
<b>Summer Term</b>	Monday 20 <sup>th</sup> April until Friday 17 <sup>th</sup> July 2015	(Bank holiday – 4 <sup>th</sup> May 2015) (Half term 25 <sup>th</sup> – 29 <sup>th</sup> May 2015) Occasional Day – Monday 22 <sup>nd</sup> June 2015 Staff Training Day – Friday 17 <sup>th</sup> July 2015